



# THANK YOU

Through your support of the Minneapolis Jewish Federation, you've shared your commitment to the Jewish community here at home and around the world. You've shared your generosity with thousands of Jews in need, young and old, from Minneapolis to Mumbai and everywhere in between.

Now it's our turn to share.

Inside this donor report, we're sharing stories that touch our hearts; stories that demonstrate the breadth and depth of impact your support makes possible. We're sharing numbers that make it clear where Federation allocates your generous donations.

**We're sharing the impact you make possible.**



# WE BELIEVE

No child should go to bed hungry. Every senior has the right to live with dignity. And all Jews should be able to live—anywhere in the world—without fear of persecution. No one is forgotten. No one is left behind.

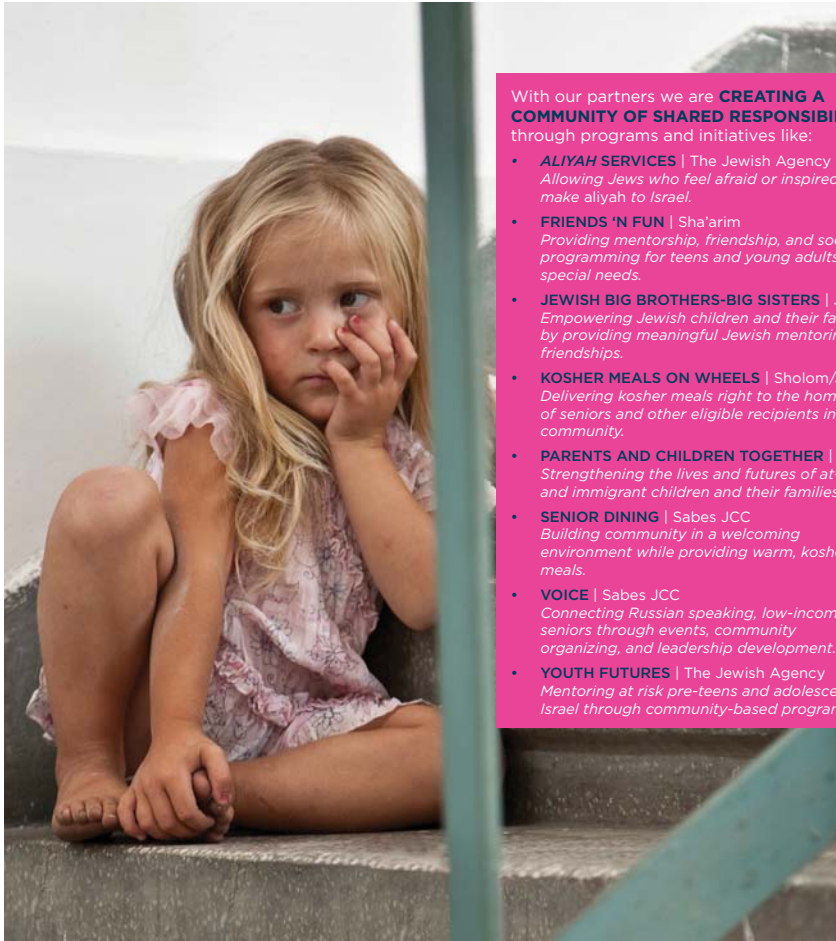
We believe in singing Hebrew songs at the top of our lungs at Jewish summer camp and dressing up like Queen Esther for Purim. In eating too many matzah balls on Passover and covering ourselves with mud before jumping into the Dead Sea.

And we believe in passing down Jewish traditions from generation to generation.

That's why we're building vibrant, inclusive, and supportive Jewish communities here in Minneapolis and across the world.

**We believe that together our impact is greater than what any of us can do individually.**

# BECAUSE WHEN ONE OF US HURTS, WE ALL FEEL PAIN



With our partners we are **CREATING A COMMUNITY OF SHARED RESPONSIBILITY** through programs and initiatives like:

- **ALIYAH SERVICES** | The Jewish Agency  
*Allowing Jews who feel afraid or inspired to make aliyah to Israel.*
- **FRIENDS 'N FUN** | Sha'arim  
*Providing mentorship, friendship, and social programming for teens and young adults with special needs.*
- **JEWISH BIG BROTHERS-BIG SISTERS** | JFCS  
*Empowering Jewish children and their families by providing meaningful Jewish mentoring friendships.*
- **KOSHER MEALS ON WHEELS** | Sholom/JFCS  
*Delivering kosher meals right to the homes of seniors and other eligible recipients in our community.*
- **PARENTS AND CHILDREN TOGETHER** | JDC  
*Strengthening the lives and futures of at-risk and immigrant children and their families.*
- **SENIOR DINING** | Sabes JCC  
*Building community in a welcoming environment while providing warm, kosher meals.*
- **VOICE** | Sabes JCC  
*Connecting Russian speaking, low-income seniors through events, community organizing, and leadership development.*
- **YOUTH FUTURES** | The Jewish Agency  
*Mentoring at risk pre-teens and adolescents in Israel through community-based programs.*

## INCLUSION



“Can you tell which kids need a little extra help; who needs to sit down for a minute because the day is overwhelming?” asks Anita Lewis, Inclusion Director at the Sabes Jewish Community Center (JCC).  
“You can’t. Because they’re completely integrated.”

- Thanks to our partner agencies and your support, **31 children of all abilities** worked one-on-one with camp advocates to experience summer camp last summer. And that’s not all:
- **130 adults** with developmental disabilities participated in events designed to help them take part in Jewish life and learn about holidays and traditions.
  - **Over 40 Jewish children** with moderate to severe disabilities participated in guided social events with **85 trained young Jewish volunteers**.

## ELDERLY



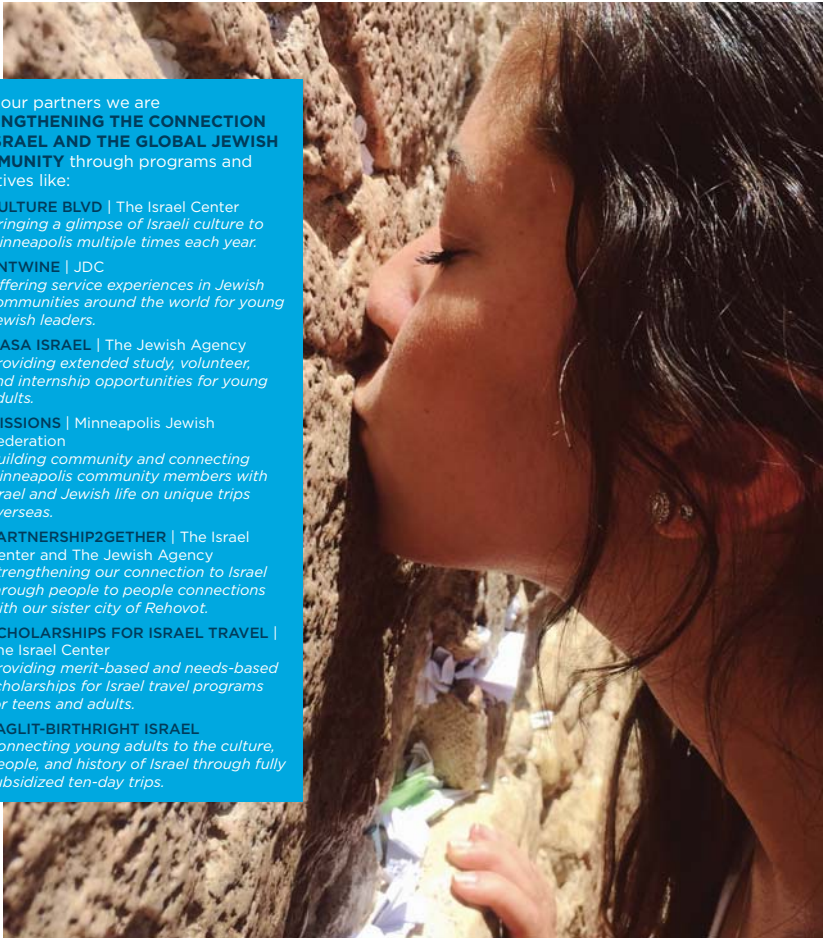
When the cold whips through Stelian Obada’s house in a remote corner of Moldova, he is lucky enough to have warm clothes, blankets, and a recently installed gas stove.  
This is all thanks to you.

- Last year, the **American Jewish Joint Distribution Center (JDC) Winter Relief program** helped nearly **15,000 elderly** and **8,000 children survive a bitter winter**.
- 130,000 destitute elderly** residents of the former Soviet Union received life-sustaining necessities such as homecare, food, medical support, winter fuel support, and other emergency assistance.
- Locally:
- **15,926 kosher meals** on wheels were served to isolated seniors and other eligible recipients in the Minneapolis area last year.
  - **Over 400 kosher hot lunches were served each month** to seniors in a welcoming environment, providing nutritious meals and helping seniors feel less isolated.

# BECAUSE WE SHARE A SACRED HOMELAND

With our partners we are **STRENGTHENING THE CONNECTION TO ISRAEL AND THE GLOBAL JEWISH COMMUNITY** through programs and initiatives like:

- **CULTURE BLVD** | The Israel Center  
*Bringing a glimpse of Israeli culture to Minneapolis multiple times each year.*
- **ENTWINE** | JDC  
*Offering service experiences in Jewish communities around the world for young Jewish leaders.*
- **MASA ISRAEL** | The Jewish Agency  
*Providing extended study, volunteer, and internship opportunities for young adults.*
- **MISSIONS** | Minneapolis Jewish Federation  
*Building community and connecting Minneapolis community members with Israel and Jewish life on unique trips overseas.*
- **PARTNERSHIP2GETHER** | The Israel Center and The Jewish Agency  
*Strengthening our connection to Israel through people to people connections with our sister city of Rehovot.*
- **SCHOLARSHIPS FOR ISRAEL TRAVEL** | The Israel Center  
*Providing merit-based and needs-based scholarships for Israel travel programs for teens and adults.*
- **TAGLIT-BIRTHRIGHT ISRAEL**  
*Connecting young adults to the culture, people, and history of Israel through fully subsidized ten-day trips.*



## ALIYAH



A panicked voice came through over the telephone. "I want to know what I have to do in order to make *aliyah* with our children," the caller said in French.

"I am afraid."

The Jewish Agency for Israel's global call center, which assists Jews from around the world in making *aliyah*, fielded a **300% increase in requests in the first half of 2015, with 80% of those calls coming from Paris.**

In fact, with your help, **more than 26,000 Jews from around the world** received assistance from Federation and the Jewish Agency during the last year to make *aliyah* and resettle in Israel.

## ISRAEL



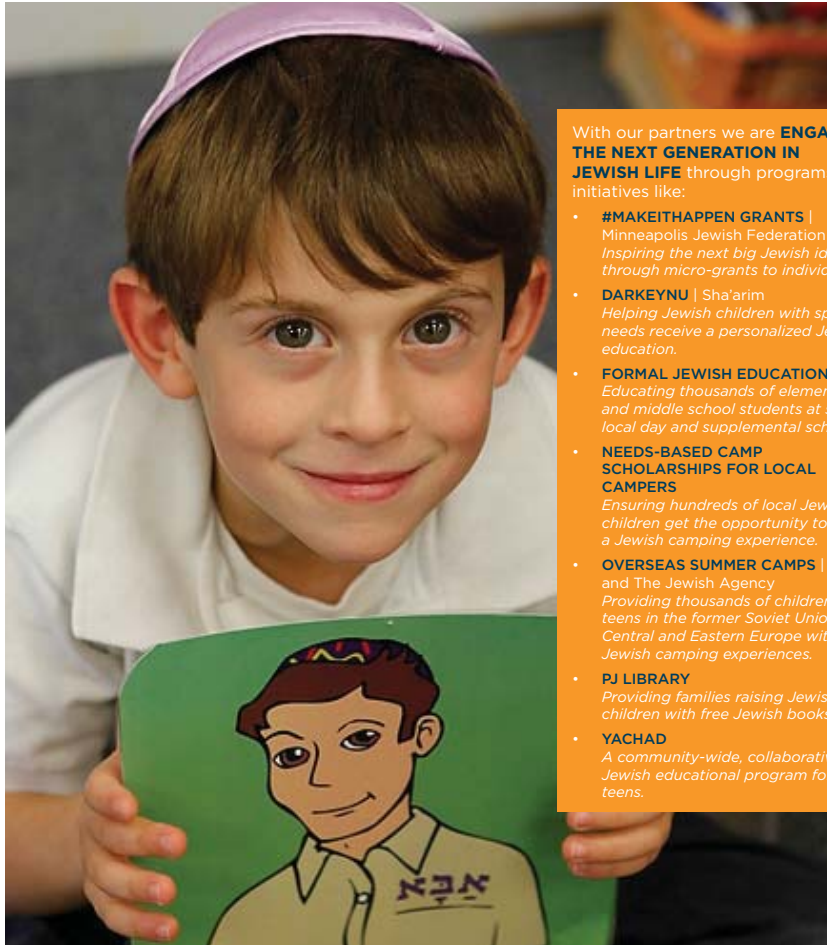
"We spread out in the desert, outlined in silhouette by the full moon. Everything was silent, and I don't know why exactly, but I started crying," explains Sophie Stillman, about her Taglit-Birthright Israel trip.

"I think because for the first time I felt truly connected to Judaism and our ancestors and everything seemed to make sense."

We believe every Jewish teenager and young adult should have the opportunity to experience Israel and connect with its people. Together, we're making that happen.

This year, like Sophie, **nearly 100 local teens and young adults** traveled to Israel with the help of scholarships provided through the Minneapolis Jewish Federation.

# BECAUSE IF WE DON'T TEACH OUR CHILDREN WHO THEY ARE, WHO WILL?



With our partners we are **ENGAGING THE NEXT GENERATION IN JEWISH LIFE** through programs and initiatives like:

- **#MAKEITHAPPEN GRANTS** | Minneapolis Jewish Federation  
*Inspiring the next big Jewish idea through micro-grants to individuals.*
- **DARKEYNU** | Sha'arim  
*Helping Jewish children with special needs receive a personalized Jewish education.*
- **FORMAL JEWISH EDUCATION**  
*Educating thousands of elementary and middle school students at seven local day and supplemental schools.*
- **NEEDS-BASED CAMP SCHOLARSHIPS FOR LOCAL CAMPERS**  
*Ensuring hundreds of local Jewish children get the opportunity to have a Jewish camping experience.*
- **OVERSEAS SUMMER CAMPS** | JDC and The Jewish Agency  
*Providing thousands of children and teens in the former Soviet Union and Central and Eastern Europe with Jewish camping experiences.*
- **PJ LIBRARY**  
*Providing families raising Jewish children with free Jewish books.*
- **YACHAD**  
*A community-wide, collaborative, Jewish educational program for teens.*

## CAMP



Did you know your gift supports “Jewish Disneyland?”

That’s what Sasha Friedman calls the JDC-Lauder International Jewish Summer Camp at Szarvas, Hungary. It serves kids from more than 20 countries each summer, offering them a chance to explore and celebrate their Jewish identities.

Because of support from donors like you across the Federation system in North America, **8,000 Jewish children and teens** in the former Soviet Union and Central Europe participated in immersive and transformative JDC and Jewish Agency summer camp experiences.

In Minneapolis, you provided **215 kids** with need-based scholarships allowing them to attend Jewish camps during the summer of 2015.

## BOOKS



As first-time parents, Robyn and her husband Gary weren’t sure how best to link their son Daniel to his Jewish heritage.

“We’re not a religious family, but we’re definitely connected to Jewish culture, history, and traditions,” Robyn says.

Enter PJ Library.

PJ Library is a national success story, serving more than 175,000 families around the world.

Here in Minneapolis, PJ Library is funded by the Minneapolis Jewish Federation and the Harold Grinspoon Foundation. PJ Library Minneapolis sends vibrant, engaging children’s books and CDs on Jewish topics and themes to **900 kids locally**.

Thanks to PJ Library, Federation, and you, many young families are connecting to their heritage through Jewish stories and songs.

# BECAUSE SHE WILL BUILD OUR VIBRANT JEWISH FUTURE



With our partners we are **BROADENING LEADERSHIP EXCELLENCE** through programs and initiatives like:

- **HILLEL STUDENT LEADERSHIP TEAM** | Minnesota Hillel  
*Engaging students in leadership opportunities, governance, and peer outreach on campus.*
- **ISRAEL LEADERSHIP FELLOWS PROGRAM** | The Israel Center, JCRC, and NCJW Minneapolis  
*Training high school students to engage in constructive Israel conversations and advocacy.*
- **MINNESOTA ISRAEL LEADERSHIP COLLABORATION** | Minnesota Hillel, JCRC, The Israel Center, Students Supporting Israel  
*Helping students combat anti-Israel (and anti-Semitic) sentiment on campus through a unique and growing Israel advocacy collaborative on the University of Minnesota campus.*
- **RUDERMAN INTERNSHIP** | Minneapolis Jewish Federation  
*Providing meaningful employment to an intern with special needs in our community.*
- **YACHAD**  
*Empowering young adult mentors to impact the path of teen students in a community-wide educational program.*

## ADVOCATES



“Like it or not, as a Jew you will be seen as an ambassador for Israel,” Sophie Mirviss, 2014 Israel Leadership Fellow, explains.

Because of her training, she explains, “Now, I can more easily refute anti-Semitic or anti-Israel ideas, and I can sit down and converse intelligently with people who disagree with me.”

The Israel Leadership Fellows Program trains students to be strong and capable advocates for Israel. The program, spearheaded by Sally Abrams and Bryan Goltzman of the Jewish Community Relations Council of Minnesota and the Dakotas (JCRC), is a collaborative effort between JCRC, Talmud Torah of Minneapolis, the National Council of Jewish Women (NCJW), and Federation’s Israel Center. The program combines classroom learning with mentoring from community leaders. Each teenage participant is matched with a mentor from the JCRC’s Speakers Bureau or NCJW who helps them become an effective voice of Israel advocacy.

Because of your support for the Israel Leadership Fellows Program and other advocacy training programs like it, **134 local teens were trained to advocate for Israel** this year.

## INCLUSION



“I want to earn money. I want to get up and feel like I’m contributing to society. As someone with a disability, the opportunities [to do that] are very limited,” says Lisa Liszt.

Federation’s values of broadening leadership excellence and making the world a better place begin with individuals like Lisa.

With support from the Ruderman Family Foundation, in 2014 the Minneapolis Jewish Federation hired Lisa as an executive intern. Working directly under the chief executive officer, Lisa spent five months gaining the skills necessary to hold a job and give back to a Jewish community that has done so much for her.

Lisa’s internship with Federation gave her the confidence to find part time work at another local nonprofit organization.

“I am employable, and I can do a good job,” says Lisa.

# BECAUSE OUR NEIGHBOR'S DISTRESS IS OUR CALL TO ACTION



The Minneapolis Jewish Federation **RESPONDS IN TIMES OF CRISIS** with emergency and special campaigns, like

- **ISRAEL EMERGENCY FUND**  
*Providing assistance for affected individuals in the wake of Operation Protective Edge.*
- **NEPAL EARTHQUAKE**  
*Providing help to earthquake survivors on the ground in Nepal.*
- **UKRAINE EMERGENCY FUND**  
*Providing food, medicine, and aid to individuals and families in the wake of the Ukrainian Crisis.*

## TRAUMA



Five-year-old Guy has spent his entire young life in Ashkelon, an Israeli city only miles from Gaza. During Operation Protective Edge, his neighbor's house was nearly destroyed by a rocket. While he was physically safe when it happened, emotionally, he wasn't the same.

After the bombing Guy would burst into tears at the sound of each siren. He became violent, throwing things and even biting people.

And then he met Hibuki.

Hibuki is a therapeutic stuffed puppy developed by the American Jewish Joint Distribution Committee (JDC), a Federation partner agency. JDC's therapists told Guy that Hibuki was scared and suffering. As Guy talked to Hibuki about its feelings, program therapists gained valuable insight into Guy's own fears.

After a few days with Hibuki, Guy was more relaxed and his violent behavior decreased. He began participating in activities and no longer clung to his mother. As he keeps healing, Hibuki will be there.

**With your support, Hibuki is one of the many invaluable tools Federation partner agencies like JDC, The Jewish Agency for Israel, the Israel Trauma Coalition, and others are using to help alleviate the impact of a summer of conflict on children and adults.**

## CRISIS



Nepal, April 25, 2015: The earth shakes and splits apart. Buildings crumble. 17,000 people are injured. 600,000 families are left homeless in minutes.

Within hours, because of your support, Federation was there.

Through local emergency campaigns held across the nation, the Jewish Federations of North America's **Nepal Relief Fund raised over \$800,000** for Nepal earthquake relief and rebuilding.

Federation partners provide a **crucial relief presence in disaster areas** around the world, including in Nepal, where Federation partners worked to:

- Distribute **over 2,000 pounds of rice and provisions, 500 hygiene kits, and 500 tarps.**
- Ship nearly **32,000 pounds of humanitarian supplies to a Kathmandu hospital.**

## LEGACY GIVING

The stories of impact in this report are made possible by thousands of generous donors—some who are still with us and some who have passed away.

### BECAUSE HER PAST INSPIRES OUR FUTURE

Because of the foresight of those who have made Federation part of their legacy, our community will thrive and grow.

We can continue to send our children and grandchildren to summer camp and Jewish day school; to gather and pray in community spaces.

And we can rest assured that Jews around the world will have someone to turn to—for generations to come.



### HOW MUCH DOES IT COST TO CHANGE THE WORLD?

While your gifts were making the impact described on previous pages, Federation volunteers were hard at work raising funds to ensure that no one is left behind.

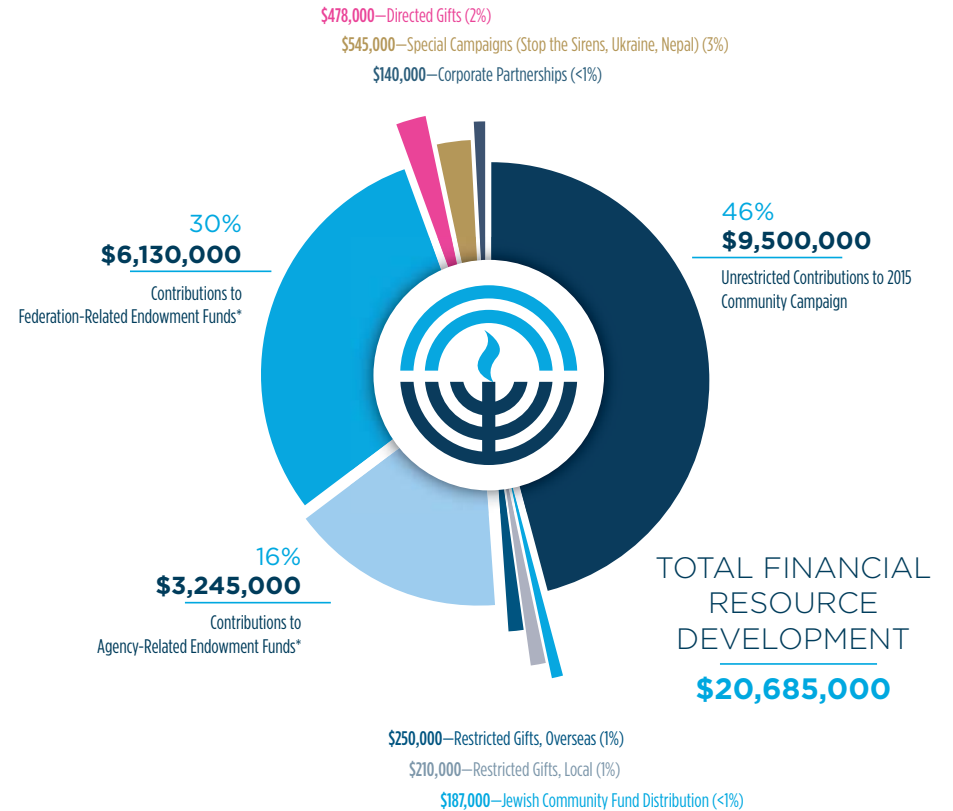
For FY 2016 the Federation will spend **only 12% of dollars raised** (total financial resource development) on fundraising and administrative expenses.

As the trusted stewards of community resources, Federation is **strategic, efficient, and transparent with every gift we receive.**

#### MINNEAPOLIS JEWISH FEDERATION FY 2016 BUDGET

\$1,167,000	Fundraising
\$1,213,000	Administration
\$880,000	Community Impact, Leadership Development, and Outreach

## 2015 TOTAL FINANCIAL RESOURCE DEVELOPMENT



\* A portion of these endowment funds remains permanently restricted, leaving only the income available for distribution.



# 2015 ALLOCATIONS

We look forward to sharing the stories of the lives changed by 2015's allocated funds.

## LOCAL & NATIONAL

### ENGAGING THE NEXT GENERATION IN JEWISH LIFE

Amos & Celia Heilicher Minneapolis Jewish Day School (HMJDS)	\$263,981
Bais Yaakov High School	\$48,338
Bet Shalom Congregational School	\$133,973
Minnesota Hillel	\$71,006
Needs-based Jewish camp scholarships for local youth	\$78,342
PJ Library Minneapolis	\$15,000
Sha'arim	\$69,071
Shir Tikvah Congregational School	\$79,524
Direct services for special-needs students at local, Jewish schools	\$42,842
Talmud Torah of Minneapolis (TT)	\$269,211
Temple Israel Congregational School	\$199,268
Torah Academy	\$240,401
Yachad	\$93,010

### CREATING A CARING COMMUNITY

Jewish Family and Children's Service of Minneapolis	\$925,501
Sholom	\$39,436
Twin Cities Jewish Community Government Affairs Program	\$85,703

### STRENGTHENING OUR CONNECTION TO ISRAEL & JEWISH PEOPLEHOOD

Israel Center of the Minneapolis Jewish Federation	\$79,320
Jewish Community Relations Council of Minnesota and the Dakotas	\$161,277

### OTHER COMMUNITY PARTNERS

Jewish Historical Society of the Upper Midwest	\$4,814
Rimon: The Minnesota Jewish Arts Council	\$15,268
Sabes Jewish Community Center (SJCC)	\$604,428

### MICROGRANTS FOR NEW LOCAL PROGRAMS & PROJECTS

Microgrants for young adult engagement	\$11,500
Microgrants for collaborative, creative, and innovative local programs	\$50,000

### COMMUNITY CAPITAL INVESTMENTS

Barry Family Campus occupancy cost subvention for HMJDS, SJCC, and TT	\$114,552
Building Repair and Replacement Fund	\$150,000
Capacity building/Capital equipment acquisition support for local agencies	\$30,000
Jewish Community Building Corporation mortgage costs	\$37,300

### JEWISH FEDERATIONS OF NORTH AMERICA (JFNA)

National Federation/Agency Alliance*	\$37,000
Community dues for national collective+	\$361,675



Because we are all responsible for one another.

## ISRAEL & OVERSEAS

### UNRESTRICTED FUNDING

American Jewish Joint Distribution Committee (JDC)	\$952,828
The Jewish Agency for Israel	\$952,828
Israel Movement for Reform and Progressive Judaism	\$10,000
The Masorti (Conservative) Movement in Israel	\$10,000

### PROGRAMS FUNDED

Humanitarian assistance for impoverished elderly—Former Soviet Union (JDC)	\$591,000
PACT (Parents and Children Together) & PACT Plus—Hadera, Israel (JDC)	\$150,000
Partnership for Children in the former Soviet Union (JDC)	\$176,687
Summer Camps—Minsk, Belarus (JAFI)	\$112,000
Summer Camps—Kharkov & Dnepropetrovsk, Ukraine (JAFI)	\$34,000
Youth Futures—Netivot & Sedot Negev, Israel (JAFI)	\$80,000

## COMMUNITY INITIATIVES

Programs such as Minneapolis-Rehovot Partnership2Gether and Yachad	\$122,000
--	-----------

## DONOR-DIRECTED

Emergency Campaigns	\$545,000
Local, National, Israel, & Overseas	\$478,000

## JEWISH COMMUNITY FOUNDATION

Grants Distributed from Designated Funds	\$1,131,518
Grants Distributed from Donor-Advised Funds	\$2,836,202

**TOTAL FUNDING FOR IMPACT..... \$12,493,804**

\* Includes: American Jewish World Service, The Association of Jewish Family and Children's Agencies, B'nai Brith Youth Organization, Hebrew Immigrant Aid Society, Hillel International, The Jewish Community Centers Association of North America, The Jewish Council for Public Affairs, Jewish Telegraphic Agency, National Coalition Supporting Eurasian Jewry, and for planning in the areas of Jewish education and engagement.

+ Supports cost-effective, national solutions to maximize collective impact in areas such as: thought leadership and advocacy to protect and secure public funds; partnering with the Government of Israel and agencies to secure the Jewish State, helping the most vulnerable and strengthening and building Jewish life around the world; building capacity of local Jewish communities; and preparing for and responding to crises.



## BECAUSE THE ACTIONS YOU TAKE TODAY CAN CHANGE THE WORLD

---

We believe that helping people in need and nurturing Jewish community are our privilege and our responsibility.

The Minneapolis Jewish Federation supports Jewish people through all phases of life in greater Minneapolis, Israel, and more than 70 countries around the world.



MINNEAPOLIS  
Jewish Federation®

13100 Wayzata Boulevard, Suite 200  
Minnetonka, Minnesota 55305  
952.593.2600 // [jewishminneapolis.org](http://jewishminneapolis.org)

THANK YOU TO OUR GENEROUS CORPORATE PARTNERS

---

PLATINUM



GOLD



SILVER



BRONZE



J.P.Morgan